



Sanderson
Weatherall

Fundraising & Community Support

Our work directly and indirectly affects the way the wider community lives, behaves and develops and we firmly believe that our business should make a positive contribution to the society in which we live.

We support and encourage our employees to help local community organisations and activities in our regions, particularly our employee chosen charities, and we are very proud that many of our employees take part in a wide range of volunteering activities across the country.

All members of the firm are encouraged to participate in charitable fund raising events and, over the years, we have supported numerous charities with local, national and international aims, objectives and interests.

SW's Annual Charity Cycle Rides

The annual SW Charity Cycle Ride has become a real highlight in the firm's calendar. Over the last 16 years, the rides have involved a total 272 SW participants, cycling routes totalling 2,588 miles! Putting it another way, the SW staff have collectively cycled over 50,498 miles on their Charity Cycle Rides (and that is equivalent to over twice the circumference of the Earth!!) – raising over £46,700 for various worthy causes in the process!



2022 - Leeds to Isle of Man



2021 - Peak District National Park



2019 - Leeds / Manchester to Newcastle



2018 London to Brussels



2017 - Whitby to Walney Island



2016 London to Paris



2015 London to Bristol



2014 Whitehaven to Tynemouth









WWF Big Winter Wander



During the week from 18th February to 26th February 2023, 32 staff members from across the network of SW offices took part in the WWF Big Winter Wander.

The aim of the challenge was for each participant to walk 10 miles over the course of the week. Staff exceeded expectations and on average, each participant walked 12 miles and raised £1,073 for WWF.



SW's 2022 Charity Cycle Ride - Leeds to Isle of Man

The SW Charity Cycle Ride has become a real highlight in the firm's calendar. Over the last 15 years, the rides have involved a total 272 SW participants, cycling routes totalling circa 2,600 miles and raising over £46,000 for various worthy causes in the process.

This year we decided to attempt something a little bit different – and opted for a linear trip that started at SW's Leeds office, cycling west across the Pennines before catching a ferry at Liverpool, crossing part of the Irish Sea, and ending up on the island nation and self-governing British Crown Dependency of the Isle of Man, whereupon the trip was completed with a 37 mile loop/lap of the islands famous and slightly hilly TT circuit.

In total the team cycled circa 165 miles over the three cycling days of 30 June to 2 July 2022.

The 2022 SW Team comprised of James Hobkirk, Simon Heather, Richard Dunn, Daniel Lever, Tom Cross, Matthew Clarke, Alastair McLeod, Matt Smith, Lee Bailey, Tom Simms, Ellen Eyre, Joey Yecan, Steve Skinner, Cameron Hampson, David Murray, Colin Jennings, Ben Bushill and Craig Watson.

Our chosen charity this year was Prostate Cancer UK, a registered charity focused on a prostate cancer research, awareness and support organisation.



Hadrians Wall Walk for Unicef Ukraine appeal

In June 2022, 5 members from SW's Property Management team teamed up with one of our clients to walk Hadrians wall a 84m trek over a 5 day period.

The expedition started out from Bowness on Solway on the west coast of England and finished at Wallsend to the east of Newcastle. The team walked up to 24 miles a day to make sure they completed the challenge in time.

To date we have jointly raised over £6,000 for Unicef's Ukraine Emergency Appeal.

UNICEF APPEAL

Millions of children and families are in immediate danger

as war continues to escalate in Ukraine.

7.5 million children have been deeply affected by the ongoing conflict. Homes, schools, water supplies and hospitals have been damaged or destroyed. Children have been separated from their families, and hundreds of thousands of people have been left without clean water, food or electricity. Explosives are a daily threat to children's lives.

We are working around the clock in Ukraine and at the borders of neighbouring countries, providing access to clean water, health care services and other critical support.



In Summer 2022 we sponsored the annual WIP Step into summer challenge. over the course of two weeks. Participants completed a virtual walking route and raised awareness for two charities Women in Sport and Smart Works.



Jackie Mills MRICS Surveyor in our London office has been selected as an APC Ambassador on behalf of LionHeart RIC. We are proud of our staff taking an active role within the RICS Community. Jackie said about the appointment:

"I contacted Lionheart at the end of 2021 as I was really struggling mentally and I was about to sit my APC. My first contact was with a lovely lady called Claire, and in that first phone call I immediately felt like I had found a life jacket of sorts. The old saying that 'a worry shared is a worry halved' is so true and the simple act of picking up the phone to just talk changes lives. We are so fortunate as Surveyors to have this invaluable service freely available. I want to shout it from the rooftops!"



Beach clean 16th September 2022 - as part of International Coastal Clean-up Day our sustainability team arranged a beach clean at one of our clients beaches, Littlehaven Beach in South Tyneside complementing to the work that is already done by their Handy Estates cleaning teams'.



Jon Tully memorial golf day - On Thursday 25th August Kevin McGorie, Partner in our Newcastle Agency team arranged a golf day at Newcastle Golf Club, raising money for Maggie's Cancer Care at the Freeman Hospital, in memory of good friend Jon Tully.

We raised over £2,500.

Lambeth Council Sustainability Initiative



London office teams joined together to undertake a day of volunteering for our local authority client the London Borough of Lambeth as part of our CSR and ESG initiatives.

With prominence being placed in today's society on green spaces and sustainability as a whole, we have been keen to partner with Lambeth Council in this respect to promote sustainability within the built environment. This is part of our current focus on sustainability and something we hope to be able continue to do for our clients going forward.

The day was spent regenerating benches and park spaces on Clapham Common to increase the longevity of the equipment and reduce the number of benches going to waste, whilst also reducing the amount of litter in the area to make it safer for the local wildlife.

We were fortunate enough to have volunteered prior to the London in Bloom at which, the team at Clapham Common once again achieved 'gold' status



Sanderson Weatherall Leeds office were again delighted to compete in the Business Fives Football Tournament. We didnt win but we gave it a good shot and raised some well needed funds for Prostate Cancer UK.



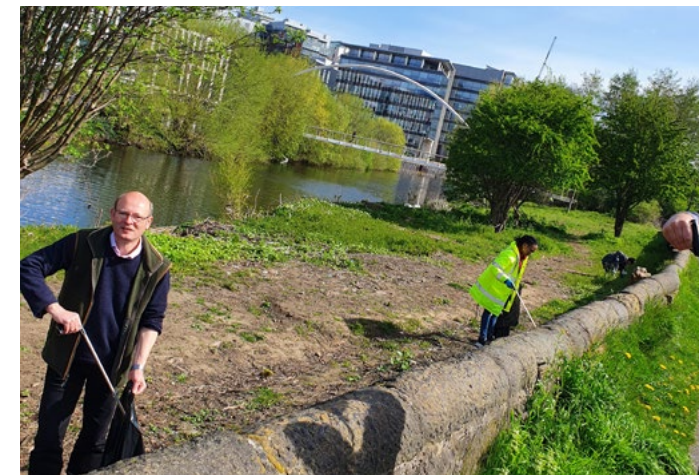
David Fairley, Partner in our Teesside office visited a local school to plant trees to further the schools green credentials. David had initially carried out a Planned Preventative Maintenance report at the school which resulted in works being carried out. As designer and project manager of the works David was able to work with other companies to obtain sustainable materials as this was one of the main focuses of the school.

Litter Picks: Clean Air Day & Earth Day 2022



To recognise Earth Day and Clean Air Day, members of our Leeds office headed out to the local canal to undertake litter picks.

The teams slightly altered on each pick but included around 10 members who headed out over the lunchtime period armed with littler pickers, bin bags and gloves to clean up along the water ways and path.





Megan Graham and Lum Neh-Chebe from the Leeds office completed the Pretty Muddy 5k race at Temple Newsam. They raised over £250 for Cancer Research.



Kay Vaughan-Payne and her family competed in the 2021 5k Santa Dash and raised over £640 for St Gemmas Hospice.

SW's 2021 Charity Cycle Ride - Tour of the Peak

The weekend of the 9th and 10th of September saw 20 cyclists from around SW's network of offices complete the 2021 SW charity cycle ride – which this year comprised 125 miles through the Peak District National Park and some parts of the adjacent Cheshire Plains and involved a very impressive 10,000ft of climbing over the two days.

About The Ride:

Day 1 saw the team head out of their Buxton base up the infamous 'Cat and Fiddle' climb, down into Macclesfield Forest and on through to Siddington before enjoying a few flatter miles on the Plains and a welcome lunch stop at the fantastic 'Apus Peak' cycle café in Knutsford. After the pit-stop lunch, the riders set-off back east to and through the villages of Nether Alderley, Over Alderley and Prestbury before ending the day with three lung busting climbs – the 'Brickworks', 'Windgather' and then a particularly steep route out of the 'Goyt Valley' before descending back down to Buxton for a well-earned cup of tea.

The second day was more of the same, with plenty of hills throughout the day broken up by cycling through some of the White Peak's most picturesque villages. Of particular highlights were a trip through the Chatsworth estate, sampling a couple of tarts in Bakewell and the climbs between Hartington and Longnor.

The Charity:

This year the SW team were proud to be supporting Sue

Ryder, and in particular the Manorlands Hospice in West Yorkshire, after the incredibly sad passing of Sanderson Weatherall colleague David Chary last year. Manorlands Hospice looked after David and his family so well in his final weeks and continue to help people with life-limiting conditions to live the best they possibly can. The fantastic staff support people through the most difficult times of their lives, with expert care and compassion from doctors, Sue Ryder Nurses and carers.

Response from Manorlands

"Here at Sue Ryder Manorlands Hospice, we always hugely appreciate every single gift that we receive, whether it be through goods donated to our shops, or sponsorship raised through taking part in events – it all counts towards the funds we need in order to provide incredible care to our patients and their families.

Once in a while we come across a team of individuals who go that extra mile in their fundraising efforts raising well over their target. In taking on your SW Cycling challenge you have managed to raise a phenomenal £2980.00 to support our work!

We are absolutely blown away by this amount and the commitment you have demonstrated to our amazing cause. From all of us here, we must say a massive, MAS-SIVE thank you and congratulations – your support is second to none and we are extremely grateful."



Women in Property - Step into Summer Challenge 2021

Throughout June Women in Property ran a 'Step into Summer Challenge' to raise awareness for Women's Aid & Girls Out Loud charities. 140 people took part and together walked 21,795,027 steps which is nearly the length of the Mediterranean coast line.

12 SW walkers contributed 1,633 km to that total step count.

Women's Aid is a leading national organisation that has been working in Ireland to stop domestic violence against women and children since 1974. We work to make women and children safe from domestic violence, offer support, provide hope to women affected by abuse and work for justice and social change. Our Direct Services for women experiencing domestic violence underpin and inform all of our work to end domestic violence.

Girls Out Loud is a UK based social enterprise with the aim to raise the aspirations of young girls between the ages of 13-18. Girls Out Loud facilitates intervention programmes in school from one day to 3 months duration



Recycling our IT Equipment



We have recently started using a company called Stone Group to dispose of our old IT equipment.

They offer secure IT asset disposal services accredited by the environmental agency and assist us with achieving GDPR compliance and reaching sustainability goals but also providing us with peace of mind that our equipment is disposed of safely so our data stays ours.

Their website confirms "Our award-winning, WEEE compliant recycling facility guarantees your end-of-life IT assets are recycled securely, to protect you from data breaches and the financial penalties they can incur. We ensure your sensitive data is erased to the same prestigious standards as the MOD, so we can provide you with peace of mind that your valuable information stays yours.

We also offer rebates for your equipment that can be given a new life, so you can use the income to spend on the new projects that help you move forward."

They list 6 benefits of recycling IT equipment

1. Reducing Landfill Space
2. Preventing Toxic Waste
3. Improved Health (by not allowing toxic waste to pollute air and water)
4. Reduction in Manufacturing Cost & Energy - 98% of an old PC can be recycled and reused.
5. Secured Data Disposal
6. Charity - Stone Group support IT Schools Africa through recycling redundant IT hardware.



Sanderson Weatherall were delighted to be one of the sponsors for Knutsford RFC's U15's tour of the North East that took place over a long weekend of 29th – 31st October 2021. The Cheshire team took up a base in Newcastle city centre, with the team of 26 players heading for a coaching session at Tynedale RFC in Corbridge on the Friday evening in preparation for a game with Alnwick's RFC U15's the following day. After a fast paced game, the Knutsford team came out on top with great spirit shown from both sides. Well done to all the boys



September 2021 - Kim Murray, Partner in our Manchester office took part in the "Run 50 miles in September Challenge" for Maggie's Centres. She ended the challenge with the Abersoch 10km run which she completed in gale force winds and rain.

Maggie's Centres are a charity who support people living with cancer. Maggie's has grown into a network of centres built beside NHS hospitals across the UK. The centres help people to take back control when cancer turns life upside down, with professional support for anything from treatment side effects to money worries.



Bishopthorpe White Rose Junior Football Club, York

Bishopthorpe White Rose Junior Football Club in York provide opportunities for over 500 boys and girls to play football, keep active and have fun. Established over 20 years ago but with no permanent home, they have had to rely on many different locations to train and to play matches.

Andrew Ellis of Sanderson Weatherall's Leeds office, is a coach at the Club and when the opportunity for a new ground was suggested, volunteered to be on the fund-raising team to raise the clubs' contribution of £85,000 which was undertaken within 2 years. With the fantastic support of City of York Council and The Football Foundation the facility is now open.

Constructed at a total cost in the order of £1.4m, the facility comprises 8 No. fantastic quality football pitches together with a brand-new pavilion containing a club room, kitchen/café, 4 No. changing rooms, referees changing rooms and ancillary facilities. The club runs training and matches for able bodied and disabled teams and is now the largest in the district.

Sanderson Weatherall provided marketing support for the fundraising through the design of brochures and flyers. We also provided planning, development and construction advice on a pro-bono basis. Sanderson Weatherall continue to be involved in the facilities management and grounds maintenance.



2019 cycle links three SW offices

25 Sanderson Weatherall property experts from across the network offices have completed the 2019 SW charity bike ride – a route which connected three of SW's northern offices.

Setting off from either SW's Leeds or Manchester offices, the two groups of cyclists headed towards the Yorkshire Dales and their first nights stop-off at the Grassington Bunk Barn. It was relatively slow going for both teams, with the Manchester contingent battling the elements, cycling through a torrential downpour and with the Leeds group facing a number of mechanical issues before they'd even completed the first 20 miles! However, all arrived safe and well and were greatly appreciative of the BBQ supper prepared by Nick 'the grill King' Heap (with some assistance from young Mr Humphreys).

Day two and the sun well and truly shone on the team, boosting morale as they set-off deeper into the Yorkshire Dales. The smiles didn't last long as the cyclists were subject to one of the toughest days cycling of any previous SW rides, incorporating the infamous climbs of Fleet Moss, Buttertubs Pass, Tan Hill and The Stang – four notoriously difficult uphill sections totalling over 6,500 ft. To say it was a relieve for the team to arrive at the Morritt Arms would be an understatement!

The final day was comparably flat as the cyclists rode from the Morritt in Greta Bridge down to their final stop of Newcastle Quayside. Unfortunately the weather gods had other ideas and turned the last half of the day in to a battle against the wind and rain – hence 25 very wet cyclists pictured!

Stuart Avery, organiser of this year's trip commented, "All in all, and despite the hills, the rain, the burnt sausages, the snoring...and the punctures... it was another fantastic trip and certainly by far the best organised ride in SW living memory. On behalf of the team, I would like to say thank you to everyone that has donated – it's an incredibly worthy cause and it really does make all the hard work worthwhile."

This year the team were fundraising for Macmillan Cancer Support, and in particular the Leslie Bessant Tribute Fund, after sadly losing colleague Les Bessant last year. An especially fitting tribute, as Les used to work in the Newcastle office – the ultimate destination for the trip. The team's efforts raised a fantastic £4,160



October 2019 - Gemma Watson, from our London office ran Royal Parks Half Marathon in London to raise money for The Prince's Trust. The Princes Trust, founded by HRH The Prince of Wales, looks to give young people the attention and opportunities they deserve.

This was Gemma's first half marathon in London and she ran it in a fantastic PB of 1h44, all very exciting milestones raising a total of £350 for a worthy cause.



October 2019 - In spite of injury, Rob Cohen, partner in our Leeds office, made it round the full length of the Yorkshire Marathon that wound through the streets of York and stretched out into the countryside beyond. Raising £455 in support of Mind, the mental health charity.



April 2019 - Jacques, a graduate from our London office completed the ultramarathon race that he undertook in Sri Lanka from 15th – 19th April 2019. Along with two friends Jacques team spent five days running varying distances through tea plantations, forests and rivers around the country covering around 250km all in aid of Seashell Trust. The team were delighted to present Seashell Trust with a cheque for £9,597 to support children and young adults with profound disabilities and additional communication needs.



November 2018 - Surveyors from our London office took part in this years Movember challenge. Alongside bake sales across our offices we're delighted to have raised over £530 which was donated to Macmillan Cancer Support.

London to Brussels Charity Ride



19 of our property experts have completed the annual SW charity bike ride which this year saw the team cycle 220 miles from London to Brussels in just three days.

The team cycled in support of Marie Curie, the UK charity providing care and support to people living with terminal illness, and their families, bringing light in their darkest hours.

Following a fantastic fundraising push from the team the total raised stood at an excellent £5,175.

About the ride

This year's ride began at Greenwich Park, home to one of the most iconic views of London and the River Thames. Having cycled from London to Paris a few years ago, the team knew to expect a busy ride out of London and after around three hours of stop start cycling, they were all relieved to arrive at Chatham for a lunch break overlooking the docks. In the afternoon, the traffic cleared and the team were able stretch their legs as they followed signs for Sustrans Route 1, a long-distance cycle route that connects Dover and the Shetland Islands. Following a tough first day the cyclists were relieved to arrive at their accommodation for the first night, in two town houses on campus at the University of Canterbury.



Having stayed 20 miles outside of Dover it was an early start and a race for the 10-o clock ferry to Dunkirk. Upon arrival in France the team set off in over 30-degree heat, keeping the sea on their left and heading for Bruges. Despite the high temperatures the team were able to keep a good pace and despite multiple stops to top on water they made it to Bruges in time for Belgium's world cup clash with Brazil!

The third and longest day, provided more of the same picturesque countryside, as the route winded alongside the canals between Bruges and Belgium. Following a much needed lunch break in Ghent the team had a decision to make, push on to try and make it the final 45 miles to Brussels and possibly risk missing the football, or stop halfway to watch the game. Taking into account the high temperature and number of miles already in their legs they took the sensible route and stopped in the typically Belgian town of Aalst. Following England's win the last 20 miles flew by, with a jubilant mood throughout the team as they rode into Brussels en masse.



November 2018 - A group from our Leeds office ran the Abbey Dash, a 10k race from Leeds city centre to Kirkstall Abbey and back. The team ran in support of our chosen charity, the Les Bessant Macmillan fund.



June 2018 - a team from our Bristol office successfully completed the Brecon Beacon 10 peaks challenge, raising over £2,200 for local charity, Youth Adventure Trust.

June 2018 - A team from our Leeds office set up some static bikes and cycled the equivalent distance of the SW London to Brussels cycle taking place next month. After a tough day of riding they had cycled over 220 miles and raised a fantastic £368.52 for Marie Curie.



April - 2018 SW have continued their support of the junior section of Knutsford RFC, as a shirt sponsor of the clubs now locally renowned 'pink-flashed' tour shirts. All age groups within the junior section were represented at this years Cheshire Cup Festival – an annual event which is held at various clubs throughout the region.





April 2018 - A team from our Teesside and Newcastle offices recently attended The Children's Foundations bowling event, which raised over £1,000 for the charity.

The team was made up of Liz McLoughlin, George Penrice, Graham Blenkarne, Gavin Richardson, Lindsay Waugh.



March 2018 - On Friday 20th March, staff from across our offices dressed down in support of Sport Relief.

The charity provide support and aim to improve the health and wellbeing in schools around the country and between our offices we raised over £200.



April 2018- Last week our Bristol office hosted pupils from Kingweston School for a work experience and confidence building morning.

Located in an old manor near Lawrence Weston, Bristol, Kingweston School is a school catering for children and young people with a wide range of needs, including Asperger's and Autism, Severe Learning Difficulties and complex needs.

Nine year 10 children from the special needs school visited our Queens Square office to see the working environment, talk to the team about work as a chartered surveyor and work life in general.

Following a morning speaking to our Bristol team we then arranged for them to go to a client's office to experience work in a tech and PR environment.



During 2017 our London office was awarded a Gold Recycling standard by First Mile recycling.

With a 100% recycling rate, our team recycled 3,040 KG, helping to save 4,320 KG of CO₂ contributing to the 60,000 tonnes of waste recycled collectively by First Mile users.



December 2017 - This year in lieu of sending christmas cards to our clients we made donations to both Shelter and St John Ambulance.

Shelter help millions of people every year struggling with bad housing or homelessness through their advice, support and legal services. St John Ambulance is the UK's leading first aid charity, their work helps educate and train hundreds of thousands across the country to provide health and safety support in their communities.



December 2017 – On Friday 15th December 2017 our Manchester office celebrated National Christmas Jumper Day in true festive style.

The team in Manchester donned their Christmas Jumpers to help raise funds for Save the Children.

Pictured are Kate Woolhouse and Kris Taylor who picked out the same jumper for the day!

Valuation of pub to assist with community led takeover

We have recently provided valuation advice to assist a community led initiative in purchasing The Prince of Wales, Foxfield – a popular pub that was due to close.

The Prince of Wales is located in Foxfield a small village on the west coast of Cumbria and is currently run by a couple who have operated the pub for 21 years who have now decided to retire.

The pub is well known in the local area and among real ale enthusiasts as it prides itself on its ever-changing selection of beers, including a range from the connected Foxfield brewery.

A small steering group has been set up to create a cooperative where members of the community can buy shares in order to help keep the pub alive and they have also received backing from The Plunkett Foundation, a charitable organisation which specialises in community led schemes.

Lawrence Pinder, valuer in our Manchester team completed the valuation and commented, "A member of the steering committee approached us knowing that as a firm we had the expertise to provide them with valuation advice. As soon as we heard that the project was to be community driven and in part funded by a charitable organisation we offered to complete the work on a 'pro bono' basis."

"It's a really interesting project and it's great to think that we have played a small part in trying to save a well-loved pub from closure and I wish them all the very best of luck!"





October 2017 - On Friday 17th November we held a dress down across our offices in support of Children in Need, the charity that raises money for disabled children and young people throughout the UK.

We raised a fantastic £312 for the charity with the company-wide dress down day, a cake sale in Leeds and a raffle, quiz and all-day buffet in our Newcastle office.



June 2017 - Megan Graham, Faye Woods and Rebecca Clarkson from our Leeds office raised a fantastic £970 for Cancer Research.

The money was raised following the girls all completing the Pretty Muddy 5k obstacle course at Temple Newsam on Saturday 3rd June.



September 2017 - On September 29th 2017 we took part in Macmillan's World's biggest coffee morning, raising money for the fantastic cancer support charity.

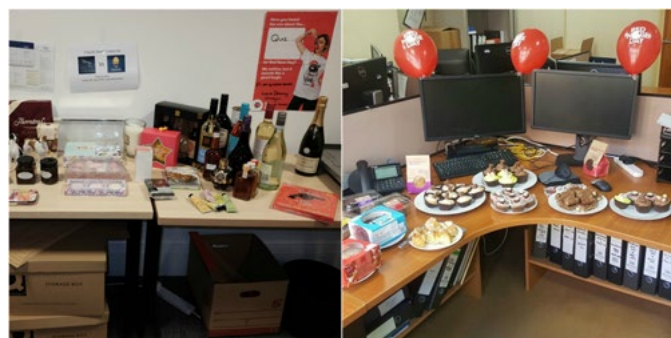
As well as dressing down our offices also participated in bake sales, with our Newcastle office putting on a full buffet!

Thanks to everyone's brilliant effort we raised £346 for Macmillan.



April 2017 - Two surveyors from our Manchester office and one from our Birmingham office recently completed the 2017 Rome Marathon.

Nick Heap, Lawrence Pinder and Aidan King all took part and all finished despite thunderstorms and Aidan slipping on a banana skin!



March 2017 - On Friday March 24th we held a dress down across our offices in support of Red Nose Day, a biennial event organised by Comic Relief.

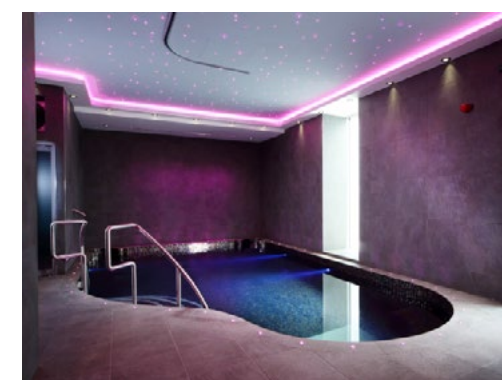
We raised a fantastic £490 for the charity with the company-wide dress down day, a cake sale in Leeds and a raffle, quiz and all-day buffet in our Newcastle office.



March 2017 - In support of our client, the Co-op, we're asking all staff to sign up to their new membership card - it gives 5% cashback on purchases and donates a further 1% to a local charity.



March 2017 - We sponsored Tynedale U8s Rugby Tour of Yorkshire. The team took 23 players and parents, including coaches to Morley RFC and Malton RFC across a weekend in March.



February 2017 - The Alan Shearer Centre Hydrotherapy Pool, which opened last year, has won a Gold SPATA award for 'Special Requirement Pool of the Year'.

The Alan Shearer centre, which is located in Newcastle, is a specialist respite, residential and social facility for people with complex disabilities and acute sensory impairments.

Our building consultancy and architecture teams designed and developed the luxury hydrotherapy pool facility for the centre, working alongside specialist pool designers and occupational therapists.



0800 122 3050
enquiries@sw.co.uk
sw.co.uk